



9U

CABINET
19 inch wall data cabinet

550MM DEEP

CAB-WFP55-9U550



9U 19" 550MM DEEP WALL DATA CABINET / RACK

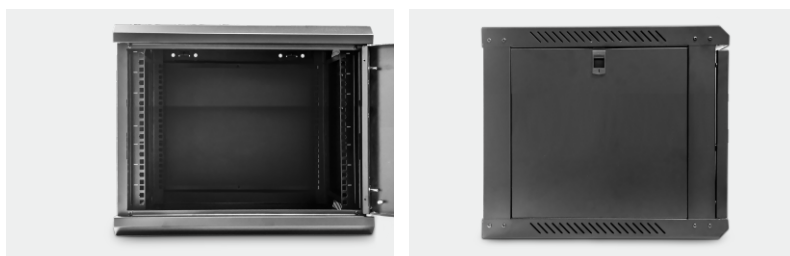
WALL MOUNTED ENHANCED CONTAINMENT SOLUTIONS

Quality Wall Enclosures

Looking for a competitively priced, fully functional Wall Enclosure?

The new range of LMS Data CAB-WFP55-9U550 wall enclosures come in a depth 550mm, ideal for rackmount devices like managed Switches, PBX or other equipment you need for your installation.

Available from stock in three popular sizes, 9U heights, the enclosures enjoy the same high build quality and features seen on the rest of the LMS Data wall enclosure range.



SPECIFICATIONS

19-Inch Wall Mounted Data Enclosure

Quality alloy finish, black powder coated

Robust mounting options - 500mm depth

Toughed Safety Glass and removable side panels

Dimensions: 600x550x510

Weight: 10KG

